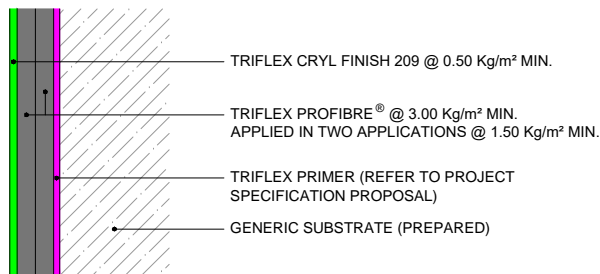
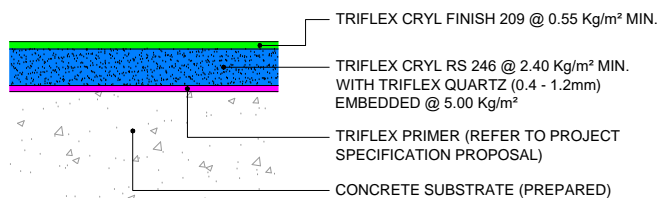


DETAIL PROTECTION

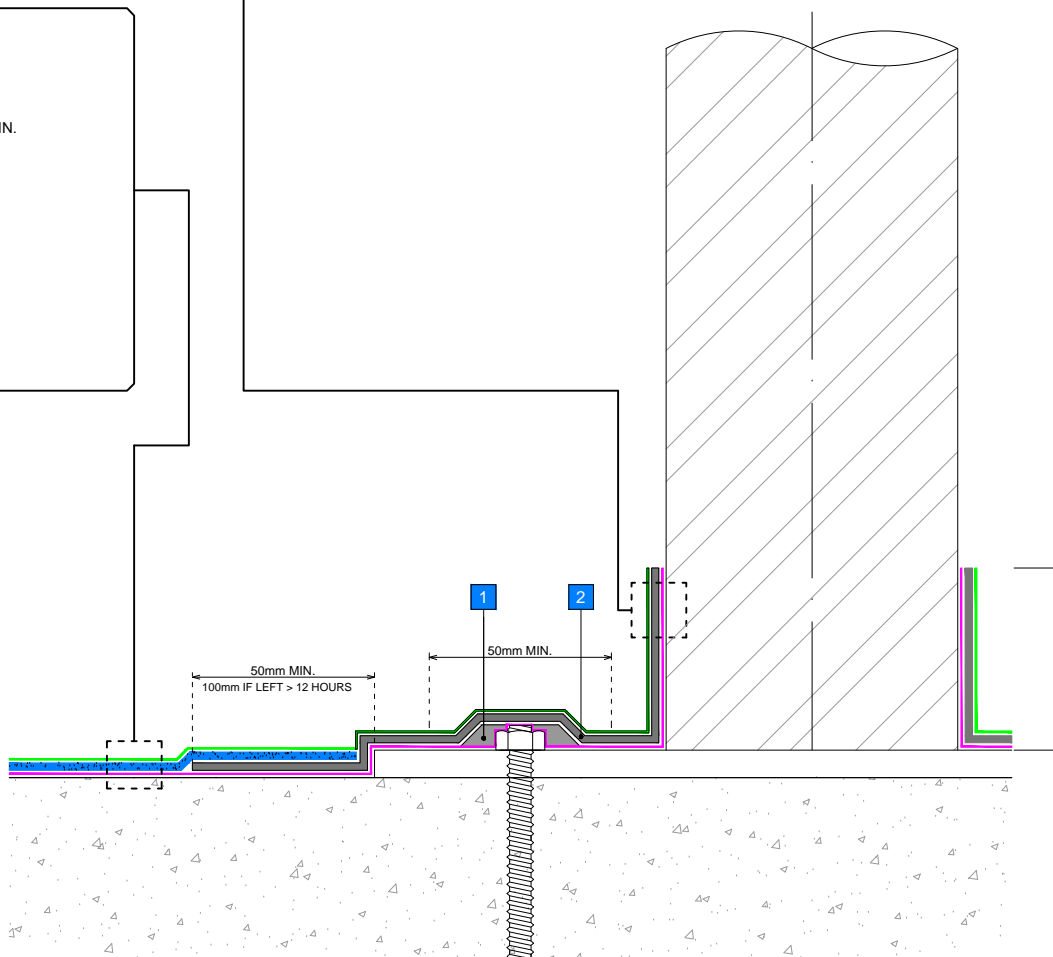


MAIN AREA PROTECTION AND SURFACING



NOTES

- 1 MAKE GOOD WITH TRIFLEX CRYL PASTE
- 2 TRIFLEX PROFIBRE® @ 3.00 Kg/m² MIN. TO ENCAPSULATE FIXINGS APPLIED IN TWO APPLICATIONS @ 1.50 Kg/m² MIN.

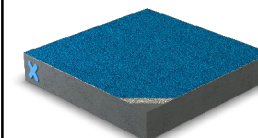


GENERAL NOTES

This drawing and any reference to structural / thermal elements should be treated as indicative only and read in conjunction with the Triflex Project specification proposal and relevant Triflex technical data. Details should be verified for accuracy and suitability as we specifically exclude any liability for errors, omissions or otherwise.

The drawing should not be reproduced or amended except with the written permission of Triflex. Do not scale, use figured dimensions only, and check all dimensions on site.

INDICATIVE SYSTEM BUILD-UP



SYSTEM

TRIFLEX DCS-C WITH QUARTZ
0.4 - 1.2mm

PROJECT

STANDARD

DETAIL

SURFACE MOUNTED DETAIL -
LESS CRITICAL UPSTAND

DRAWING NUMBER

DCS-C WITH QUARTZ_041_
SURFACE MOUNTED DETAIL -
LESS CRITICAL UPSTAND

SCALE

NTS

DATE

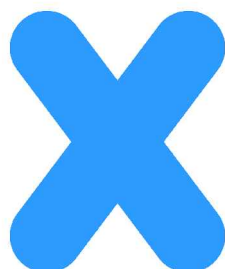
13/08/2018

Triflex

Delivering solutions together

Triflex (UK) Limited

Whitebridge Way | Stone | Staffs
ST15 8JS | Tel: 01785 819119
www.triflex.co.uk | info@triflex.co.uk



CAR PARK | MARKINGS | REPAIRS