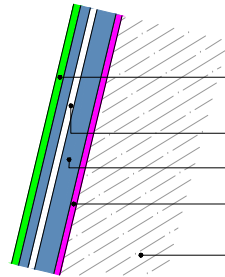
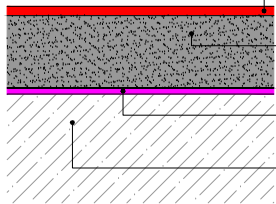


DETAIL PROTECTION



- TRIFLEX CRYL FINISH 209 (THIXO IF VERTICAL > 250mm) @ 0.50 Kg/m² MIN.
- TRIFLEX 110g REINFORCEMENT FLEECE
- TRIFLEX PRODETAIL® @ 3.00 Kg/m² MIN.
- TRIFLEX PRIMER (REFER TO PROJECT SPECIFICATION PROPOSAL)
- GENERIC SUBSTRATE (PREPARED)

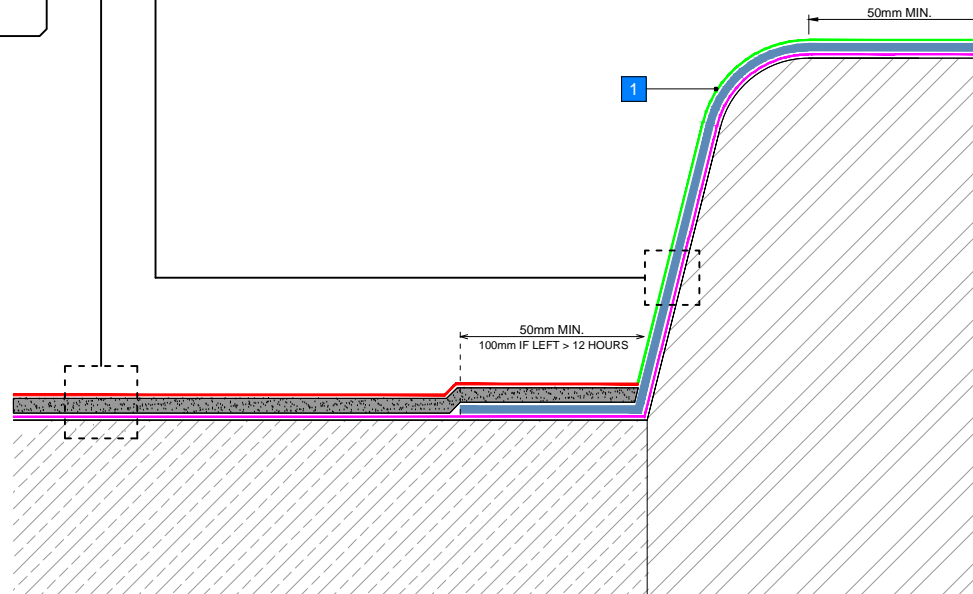
MAIN AREA WATERPROOFING



- TRIFLEX CRYL FINISH 202 @ 0.80 Kg/m² MIN.
- TRIFLEX DECKFLOOR RS THIXO (BLACK) @ 4.50 Kg/m² MIN. WITH TRIFLEX EMERY (1.0 - 3.0mm) @ 6.00 Kg/m² APPROX.
- TRIFLEX PRIMER (REFER TO PROJECT SPECIFICATION PROPOSAL)
- GENERIC DIMENSIONALLY STABLE / SUITABLE SUBSTRATE (PREPARED)

NOTES

- 1 MECHANICAL DAMAGE TO BE TREATED AS MAINTENANCE ITEM

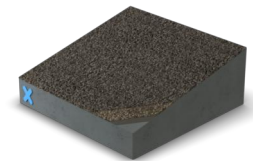


GENERAL NOTES

This drawing and any reference to structural / thermal elements should be treated as indicative only and read in conjunction with the Triflex Project specification proposal and relevant Triflex technical data. Details should be verified for accuracy and suitability as we specifically exclude any liability for errors, omissions or otherwise.

The drawing should not be reproduced or amended except with the written permission of Triflex. Do not scale, use figured dimensions only, and check all dimensions on site.

INDICATIVE SYSTEM BUILD-UP



SYSTEM

TRIFLEX DECKFLOOR RAMP WITH EMERY 1.0 - 3.0mm

PROJECT

STANDARD

DETAIL

KERB - FULLY ENCAPSULATED

DRAWING NUMBER

DECKFLOOR RAMP_019_KERB - FULLY ENCAPSULATED

SCALE

NTS

DATE

13/08/2018

Triflex

Delivering solutions together

Triflex (UK) Limited

Whitebridge Way | Stone | Staffs
ST15 8JS | Tel: 01785 819119
www.triflex.co.uk | info@triflex.co.uk



CAR PARK | MARKINGS | REPAIRS