



# CASE STUDY

# Triflex

Delivering solutions together.

CAR PARK  
MANCHESTER, UK

# 111 PICCADILLY

#### Systems

Triflex DeckFloor

#### Authorised Contractor

Makers Construction Ltd.

#### Scope of work

Waterproofing and surfacing of  
roof-top car park

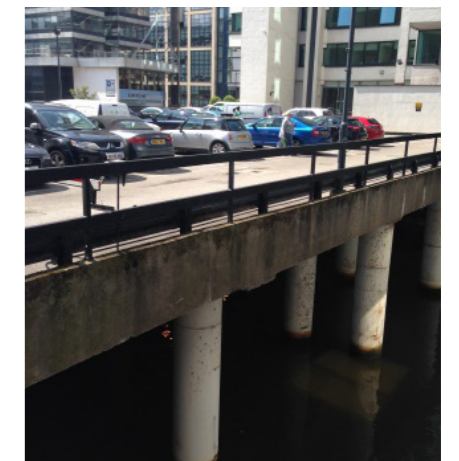


# The challenge

With access to Manchester's largest transport hub, the Bruntwood's owned 111 Piccadilly offers a variety of office suites within a modern, contemporary space. Formerly known as Rodwell Tower, the impressive 18-storey office space at 64m high is Manchester's 16th tallest building. With neighbouring Manchester's Piccadilly Railway Station, this newly-refurbished high-rise impressively links the pedestrian, railway commute and A6 carriageway together.

To accommodate visitor parking, 111 Piccadilly boasts an open, surface car park to the rear that straddles the Rochdale canal. As such, this remarkable structure is more akin to a bridge than a traditional ground bearing car park. Following inspection in April 2015, it was identified that the existing and unusually thick macadam surfacing had substantially degraded, through constant trafficking and exposure to the elements, resulting in water ingress into the concrete deck. Usually to repair this would require the wholesale removal of the macadam coverings and any underlying waterproofing, causing considerable disruption and expense.

However, following extensive testing of the macadam substrate, Makers Construction Limited in conjunction with Triflex UK were engaged to carry out a full intrusive survey and recommend a solution.







# The solution

The Triflex DeckFloor system was identified as the best value solution given its successful track record in the overlay of bituminous coverings such as paving mastic asphalt and macadam. With the ability to waterproof and surface both asphalt and concrete substrates, the heavy duty system incorporates a BBA and ETA certified reinforced waterproofing membrane for high risk areas and details, in combination with an exceptionally durable, waterproof wearing layer. Moreover, the totally cold applied system has a proven track record, supported with EN 1504-2 certification, ensuring security and peace of mind.

Following extensive testing, the deck surface was mechanically prepared prior to the application of the DeckFloor system in contrasting colours, including demarcation of pedestrian walkways.

With thanks to Makers Construction for the refurbishment and application of Triflex DeckFloor, the newly refurbished car park opened in October 2015.



# Triflex

Delivering solutions together.

Triflex is the leading European specialist in liquid waterproofing solutions. Our high-quality systems provide reliable and lasting waterproofing for roofs, balconies and parking decks. We are a family owned and operated company that provides individual solutions worldwide. From our production facilities based in Minden, Germany, we have been researching and developing solutions designed to protect and repair our clients structures for more than 40 years.

In the UK we pride ourselves on providing our clients with tailored solutions and exceptional levels of service & support throughout all stages of their project. From conducting in-depth site surveys, to our comprehensive testing and off-site and on-site support we ensure your project is completed on time and to the highest standards. All Triflex solutions are certified to the relevant UK & European standards and are accompanied with long term warranties to provide peace of mind.

☎ 01785 819119

🌐 [www.triflex.co.uk](http://www.triflex.co.uk)

✉ [info@triflex.co.uk](mailto:info@triflex.co.uk)

🌐 Triflex (UK) Ltd

🐦 @TriflexUK

Triflex (UK) Ltd. | Whitebridge Way | Stone | Staffordshire | ST15 8JS

## System benefits

### Triflex DeckFloor

- Proven, locally reinforced, elastomeric waterproofing membrane
- Asphalt overlay
- Fully warranted
- High levels of anti-skid
- Tough and durable
- Maximum design options
- Rapid curing system - even at low temperatures

Surface finish

Waterproofing (single process)

Primer (if required)

