



# CASE STUDY

# Triflex

Delivering solutions together.

PRIVATE TERRACE  
BRIGHTON, EAST SUSSEX

## WITHDEAN CLOSE

**Area**  
75m<sup>2</sup> Terrace

**Systems**  
Triflex BTS-P

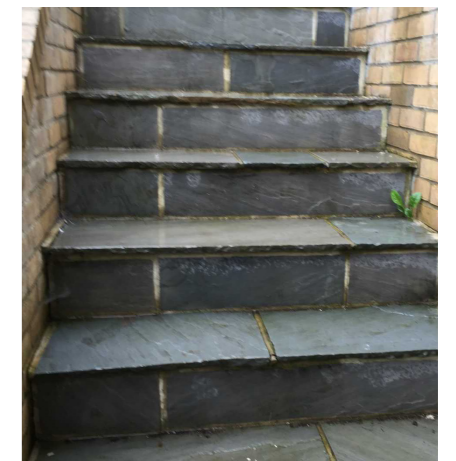
**Authorised Contractor**  
Sussex Roofing Ltd.

# The challenge

In September 2016, Triflex were contacted by a homeowner suffering from a water ingress problem that had been stopping them from utilising a 50m<sup>2</sup> habitable space under their sun terrace. The project in question was in relation to a privately owned 75m<sup>2</sup> terrace with a radial edge, which had not been used within the last 7 years due to high levels of standing and ponding water which was leading to water ingress.

The terrace perimeter guttering had been incorrectly installed which created a back fall onto the existing brickwork. This meant that the terrace was constantly saturated and vegetation growth was rife. The existing falls on the terrace were not adequate for the area and the balustrades had become hazardous due to the saturated substrate.

The existing substrates included a block and beam deck with a sand and cement screed. The finished build-up consisted of 32mm Indian sandstone slabs, bedding mortar and a damp proof membrane which had failed.





# The solution

Following extensive site surveying and testing by Triflex the decision was taken to specify the Triflex BTS-P system. Testing had revealed that it would be the best solution for the project, as it had excellent adhesion to all existing substrates, while providing an optional 7 surface finishes with over 70 colour choices for the end client to choose from.

The existing system was completely removed back to the block and beam structural deck. A Polymodified laid to falls screed was then applied to the substrate. This was utilised due to the reduced amount of water required in comparison to a standard sand and cement screed, allowing for a reduced overlay time for the Triflex system.

Triflex BTS-P is a BBA and ETA Certified system which is totally waterproof and is abrasion and impact resistant. It has been specifically designed to be used over occupied premises. The radial edge provided no cause for concern as Triflex BTS-P is cold liquid applied system which can form to meet any shape.

The client was initially in two minds when choosing between Triflex Stone Design and Triflex ColourQuartz for the final surface finish. But with the ColourQuartz finish being available with a wider selection of colour options, it provided the bespoke look the client was looking for.

Lastly the Triflex BTS-P solution meant that any future issues with standing or ponding water would be no cause for concern as this system is hydrolysis resistant, meaning it is not affected by submersion under water.

# Triflex

Delivering solutions together.

Triflex is the leading European specialist in cold liquid applied resins. Our high-quality systems provide reliable and lasting waterproofing, surfacing, protection and markings for roofs, walkways, balconies, terraces and car parks. We are a family owned and operated company that provides individual solutions worldwide. From our production facilities based in Minden, Germany, we have been researching and developing solutions designed to protect and repair the built environment for more than 40 years.

From our UK headquarters based in Stone, Staffordshire we pride ourselves on providing our clients with tailored solutions and exceptional levels of service and support throughout all stages of their project. From conducting in-depth site surveys, to our comprehensive testing and off-site and on-site support, we ensure that your project is completed on time and to the highest standards. All Triflex solutions are certified to the highest standards and are backed up by long term meaningful warranties ensuring peace of mind.

## Testimonial

"WE ARE REALLY PLEASED WITH THE LEVEL OF SERVICE AND CARE THAT HAS BEEN PROVIDED BY TRIFLEX. WITHOUT THEIR WATERPROOFING SOLUTION IT WOULDN'T HAVE BEEN POSSIBLE TO UNDERGO THE RENOVATION OF OUR BASEMENT AREA WHICH WE NOW HOPE TO RENT ON AIR B&B."

01785 819119

[www.triflex.co.uk](http://www.triflex.co.uk)

[info@triflex.co.uk](mailto:info@triflex.co.uk)

[Triflex \(UK\) Ltd](#)

[@TriflexUK](#)

Triflex (UK) Ltd. | Whitebridge Way | Stone | Staffordshire | ST15 8JS

## System benefits

### Triflex BTS-P

- Totally cold applied, with no risk from hot works
- Compatible with virtually all roof substrates - including asphalt
- Suitable for refurbishment and new build projects
- Abrasion and impact resistant
- Anti-skid / anti-slip
- Exceptionally rapid curing
- Fully bonded - excellent adhesion to the substrate and inter-layers
- Hydrolysis (standing and ponding water) resistant

Surface Finish

Waterproof

Wearing Layer

Waterproofing

Single process

Primer

