

# CASE STUDY

# Triflex

Delivering solutions together.

TERRACE REFURBISHMENT

# THE POINT BUSINESS CENTRE NOTTINGHAM

**Authorised Contractor:**

Cassie Thomas & Sons

**Area**

100m<sup>2</sup>

**Client:**

Rushcliffe Borough Council

**Systems**

Triflex ProTerra® Quartz Design

Triflex ProScreed

📞 01785 819119

🌐 [triflex.co.uk](https://triflex.co.uk)

✉ [info@triflex.co.uk](mailto:info@triflex.co.uk)

🌐 [Triflex \(UK\) Ltd](https://www.linkedin.com/company/triflex-uk)

🐦 [@TriflexUK](https://twitter.com/TriflexUK)

# Introduction

The Point Business Centre in Nottingham is a modern Grade A office building. A terrace area provides accessible outside space for the third-floor office area.

With water ingress into spaces below, the terrace was refurbished to provide a watertight roof and provide usable outside space.

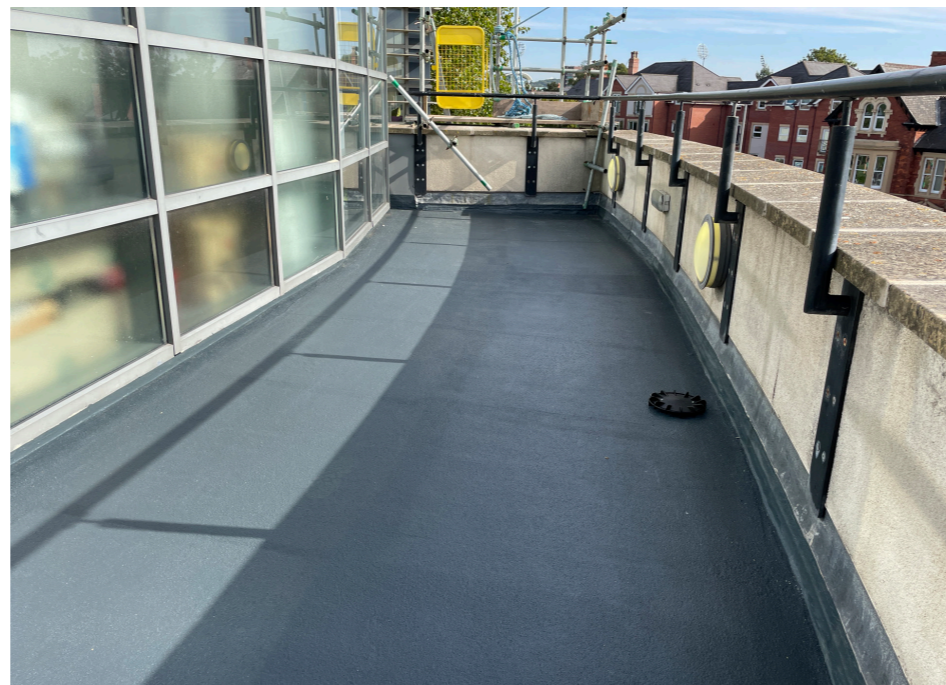


# The challenge

The terrace area is over occupied second floor offices. The original build-up included a buried mastic asphalt waterproofing with an overburden. At some point this overburden was removed and overlaid with a liquid coating.

The terraces' existing waterproofing membrane was failing, with water ingress, ponding water, drainage concerns and defects including cracks, blisters, ruckling and slumping evident.





# The solution

It was important to establish the terrace build-up and condition of the underlying substrate, in order to provide the best solution for the client. The Triflex technical team undertook core sampling which determined that the build-up included insulation, timber deck, mastic asphalt and an unknown liquid coating. The mastic asphalt was determined to be in very poor condition and not suitable for direct traffic. As a consequence the timber deck and furring strips had begun to fail too.

Working with Triflex Authorised Contractor Cassie Thomas & Sons and the client, Rushcliffe Borough Council, it was determined that the solution should include stripping up the existing waterproofing build-up due to its poor state. A solution was required that improved the falls and reduced the ponding issues as part of the terrace refurbishment. As with many terraces, balconies and walkways, the existing upstand heights need careful consideration. The terrace upstand height in this case was inadequate for a tapered scheme, and an alternative was required.

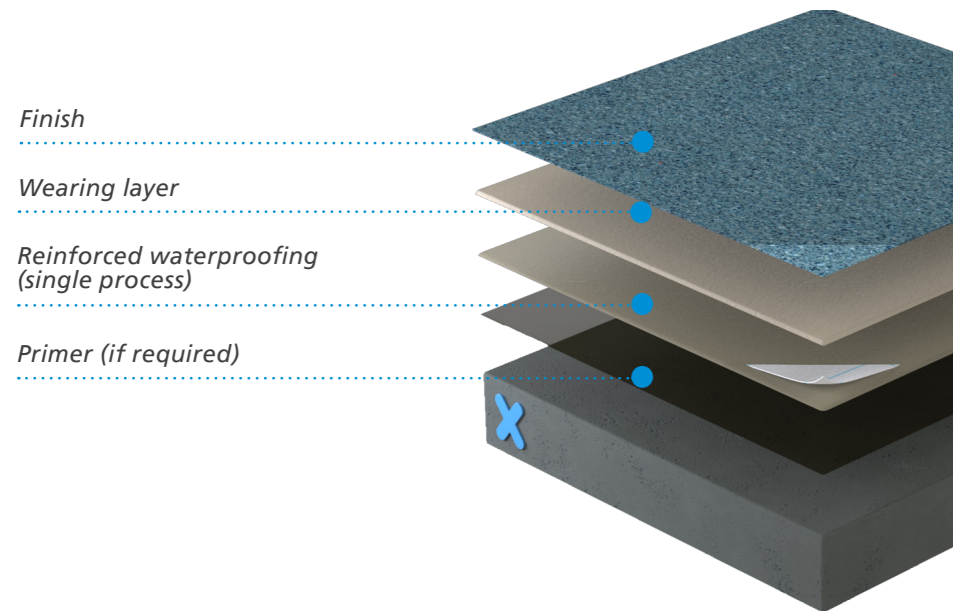
Triflex bespoke project specification proposed Triflex ProScreed, a new rapid curing screed that could be rapidly laid to falls to a minimum thickness of just 5mm. Rainproof in as little as 30 minutes and able to withstand stress in 60 minutes, falls can be quickly created and ready for the Triflex waterproofing solution.

Here, a Triflex ProTerra Quartz Design with large grain quartz was proposed to meet the requirement for a directly trafficked system that was EN 1305-5 B<sub>ROOF</sub>(t4) tested. The Polymethyl methacrylate (PMMA) resin based system delivers rapid curing liquid applied waterproof membrane with high levels of anti-skid. Triflex PMMA resins are hydrolysis resistant meaning that they will not degrade in water, but with an improved fall ponding water should be a thing of the past.

The use of the Triflex screed and waterproofing rapid curing systems together meant that the terrace could be refurbished quickly. Completed to a high standard, the 100m<sup>2</sup> terrace is now a usable, safe and inviting asset to the modern office block.

## System benefits Triflex ProTerra®

- Totally cold applied, with no risk from hot works
- Exceptionally rapid curing / rainproof times, even at low temperatures
- Compatible with a wide range of substrates
- Can accommodate movement and cracking within the structure
- Unaffected by ponding water, resistant to chlorides and carbon dioxide ingress
- Fully reinforced waterproofing technology
- Solvent, isocyanate and plasticiser free



## System benefits Triflex ProScreed

- Cold liquid applied
- Exceptionally fast curing
- Mouldable
- High compressive strength - ca. 60N/mm<sup>2</sup>
- Chemical resistant
- UV resistant
- Mechanically resistant
- Water resistant
- Solvent and isocyanate free



# Triflex

Delivering solutions together.

Triflex is the leading European specialist in cold liquid applied waterproofing, surfacing and marking resins. Our high-quality systems provide reliable and lasting waterproofing, surfacing, protection and markings for roofs, walkways, balconies, terraces, car parks, roads and infrastructure.

We are a family owned and operated company that provides tailored solutions worldwide. From our production facilities based in Minden, Germany, we have been researching and developing solutions designed to protect and repair the built environment for more than 40 years.

From our UK and Ireland headquarters based in Stone, Staffordshire we pride ourselves on providing our clients with tailored solutions and exceptional levels of service and support throughout all stages of their project. From conducting in-depth site surveys to our comprehensive testing and off-site and on-site support, we ensure that your project is completed expertly. Triflex solutions are certified to the highest standards and are backed up by long-term meaningful warranties, ensuring peace of mind for years to come.

☎ 01785 819119    🌐 [triflex.co.uk](https://triflex.co.uk)    ✉ [info@triflex.co.uk](mailto:info@triflex.co.uk)

📄 Triflex (UK) Ltd    🐦 @TriflexUK